

# I N S P I R E D

JANUARY 2010

## WELCOME

Happy New Year and welcome to the **new look** *Inspired* for January 2010.

To start the year off we investigate the cost-benefit relationship of indoor plants in our working environments. You will see in our article, "**Indoor Plants . . . Cost or Benefit**", how beneficial indoor plants really are providing much more benefit than they cost.

This issue in "**Latest in Planters**" the **Diamond** finish by Elho is featured. This glossy finish has been applied to many of the Elho planters as it adds a very modern appeal.

The popular article "**Before and After**", takes us to a private residence, where Green Inspiration revamped their indoor and outdoor garden beds with a modern array of plants.

In future issues of *Inspired* we will continue to keep you up to date with the latest research on indoor air quality and we will review the most fashionable indoor plants on the market.

We hope you enjoy reading this issue and look forward to providing you with more *Inspired* articles in the future.



*Green Inspiration at the Damiani's*

## INDOOR PLANTS . . . COST OR BENEFIT?

An Australian study\* analysed the cost-benefit of hiring indoor plants in a workplace. The study calculated the cost to hire a basic plant at \$200 p.a. The salary of a hypothetical staff member was estimated at \$50,000 p.a.

A study by Lohr et.al 1996, found that staff in planted offices show a 12% higher productivity on computer tasks and less stress than those without plants. Therefore the staff member in a planted office is worth 12% more to the business or \$6,000 (\$50,000 x 12%). Even if the productivity gain from indoor plants was just 1% or \$500, that is over two times the cost of the plant hire.

If you also take into account the reduced sick leave absences which accompany planted offices, the benefits of indoor plants are substantial.

There is overwhelming evidence that the benefits of indoor plants in a workplace far outweigh the cost of their hire.

**"cost to hire a basic plant is \$200 p.a."**

**"staff member worth 12% more or \$6000 .....with indoor plants"**



\* Source: "Interior plants for sustainable facility ecology and workplace productivity", Burchett M, Torpy F & Brennan J. May 2008

## LATEST IN PLANTERS



Brussels in diamond

The **Diamond** finish by Elho is a high gloss covering which is ultra modern and stylish.

The **Milano** and **Brussels** containers both come in **Diamond** allowing flexibility in mix & match design combinations. Both Milano and Brussels come in small desk planters (pictured) and larger floor planters.

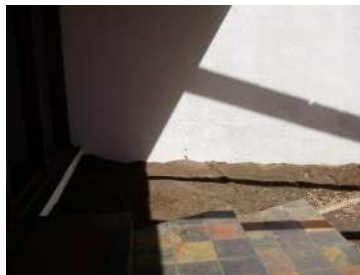
If you would like the Diamond look in your work place contact Green Inspiration on (02) 6296 3029 .

Source: [www.elho.com.nl](http://www.elho.com.nl)



Milano in diamond

## BEFORE & AFTER



Green Inspiration was recently contacted to design garden beds for the Damiani's (private residence).

Presented with a blank canvas we provided the customer with a design incorporating their foliage and colour preferences.

The design incorporated a combination of contrasting purple and green with subtle contrasts of foliage shapes and heights. Plants chosen included *Cycas revoluta*, *Yucca elephantipes*, *Cordyline australis* 'burgundy spire' & 'red chocolate' and *Dianella* 'cassa blue'.

The result was an impressive display of young and mature plants which now define the space and provide impact to the front entrance of the residence.

